

## Action Menu:

December 23, 2003



**New:** Use this command to create a new portfolio/tab

**Open:** Use this command to open a portfolio/tab that already exists on your local computer or database

**Refresh:** Use this command to negate all the changes made since the file was last saved. The button reverts to the last saved copy of the portfolio/tab

**Close:** Use this command to close the portfolio/tab that is currently open

**Save:** Use this command to save the portfolio/tab that is currently open

**Save All:** Use this command to save all the portfolios/tabs that are open

---

**C.H.Ted Hong**  
CEO & President  
646.313.3330  
ted@beyondbond.com

## EXTENSIVE RISK ANALYSIS SUMMARY

**Duplicate:** Use this command to create a new portfolio/tab that duplicates the currently selected portfolio/tab

**Print Preview:** Use this command to open up a preview of the current portfolio/tab selected in Adobe Acrobat

**Page Setup:** Use this command to customize a portfolio/tab to a certain format

- Select a distinct page size (inches)
- Choose the orientation (Portrait/Landscape)
- Select the details (Header, Font Size)
- Set the margins (inches)

**Update Settlement:** Use this command to update the settlement information from the Beyond Bond Server of the bonds that are selected (checked off)

**Calculate:** Use this command to calculate all remaining fields that aren't already calculated for the selected bonds (checked off). The calculate function uses a number of different equations and algorithms provided by Beyond Bond to generate results used solely for managing risk in a portfolio. There are many different factors entailed in each scenario therefore accounting for many different hypothetical situations.



- Stochastic Analysis
- Sensitivity Analysis
- Choose market environment
- Create a shift in the market
  - If a shift is added to the scenario, 3 new columns per shift scenario are created when calculation occurs this includes: Price, Price Drop, and Duration of the newly shifted market results.

**Exit:** Use this command to exits the program

## PORTFOLIO MENU:

**Import from Active:** Use this command to import an actual running portfolio/tab owned by the company

**Refresh from Active:** Use this command to negate all the changes made to the imported active portfolio/tab. The portfolio/tab will revert back to the last real-time copy of the portfolio/tab

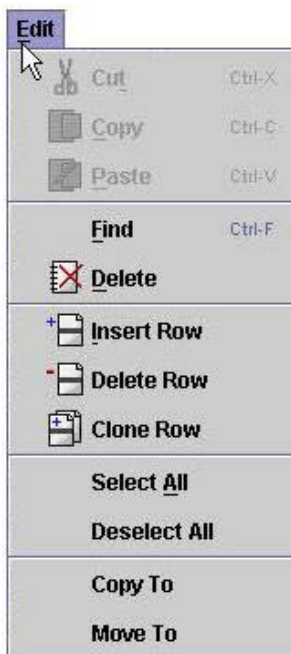
**Export to Active:** Use this command to export the updated price changes of the portfolio/tab back to the actual server where the portfolio is stored

**Mark Positions:** Use this command to set/hold the price of a certain security across the entire server

*NOTE:* Only certain users have access are to mark particular securities

**Trade Security:** Use this command to bring the selected securities up on the trade entry screen only if the trade entry program is running. From the trade entry screen, you can proceed to buy/sell securities

## EDIT MENU:



**Find:** Use this command to find an occurrence of a specific phrase, word or number.

- If the search is case sensitive, click the **Match Case** checkbox.
- To choose the direction in which the search will be conducted, select either the **Up** or **Down** radio buttons.
- Click the **Find Next** button to continue searching, in the selected direction, for the next occurrence.

**Delete:** Use this command to permanently delete a portfolio/tab.

**Insert Row:** Use this command to insert a new row at the bottom of the current portfolio/tab.

**Delete Row:** Use this command to delete the currently selected row.

**Clone Row:** Use this command to create a copy of the currently selected row and insert it at the bottom of the portfolio/tab.

**Select All:** Use this command to select all the rows in the current portfolio/tab.

**Deselect All:** Use this command to deselect all the rows in the current portfolio/tab.

**Copy To:** Use this command to copy the currently selected row(s) to another portfolio/tab.

- Expand the list of available destination portfolios/tabs by clicking the ▼
- Select the desired destination portfolio/tab and click **OK**.
- The selected rows appear at the bottom of the selected destination portfolio/tab.

**Move To:** Use this command to move the currently selected row(s) to another portfolio/tab.

- Expand the list of available portfolios/tabs by clicking the ▼
- Select the desired destination portfolio/tab and click **OK**.
- The selected rows are removed from the current portfolio/tab and appear at the bottom of the selected destination portfolio/tab.

## VIEW MENU:

**Save View:** Use this command to save all of the current row and column view preferences.

- Give the current settings a name and click **OK** to save.
- Once saved, settings are available for quick access under the **View** menu.

**Delete View:** Use this command to delete view settings.

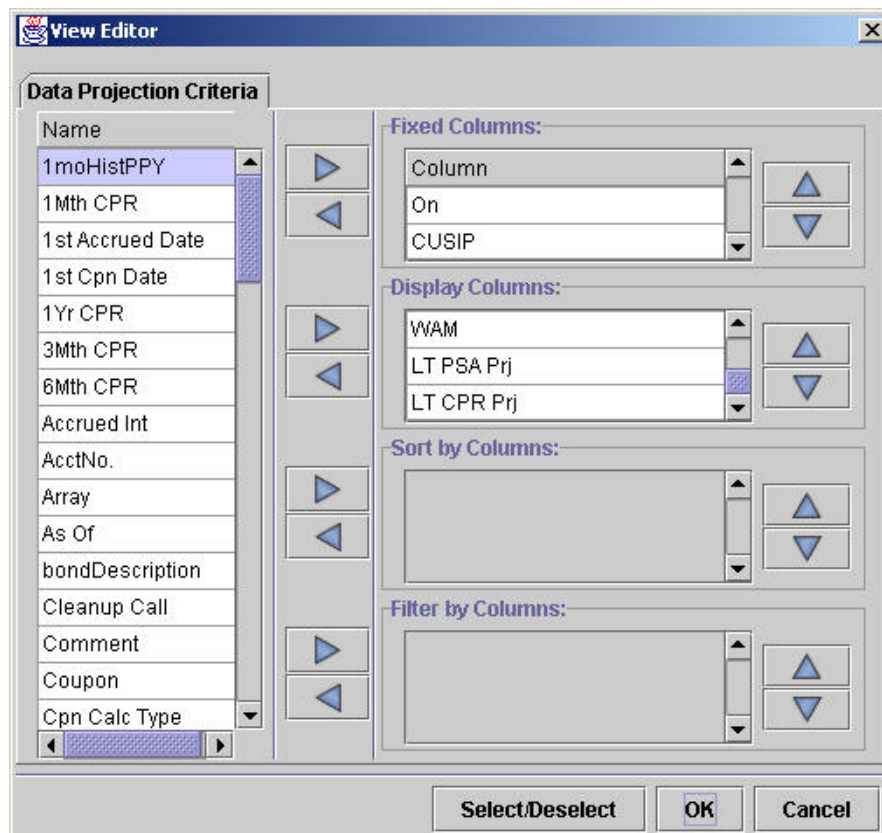
- Select a view setting from the list and then click the **Delete** button.

## TOOLS MENU:



**Search Security:** Use this command to search for particular securities. Available search criteria are:

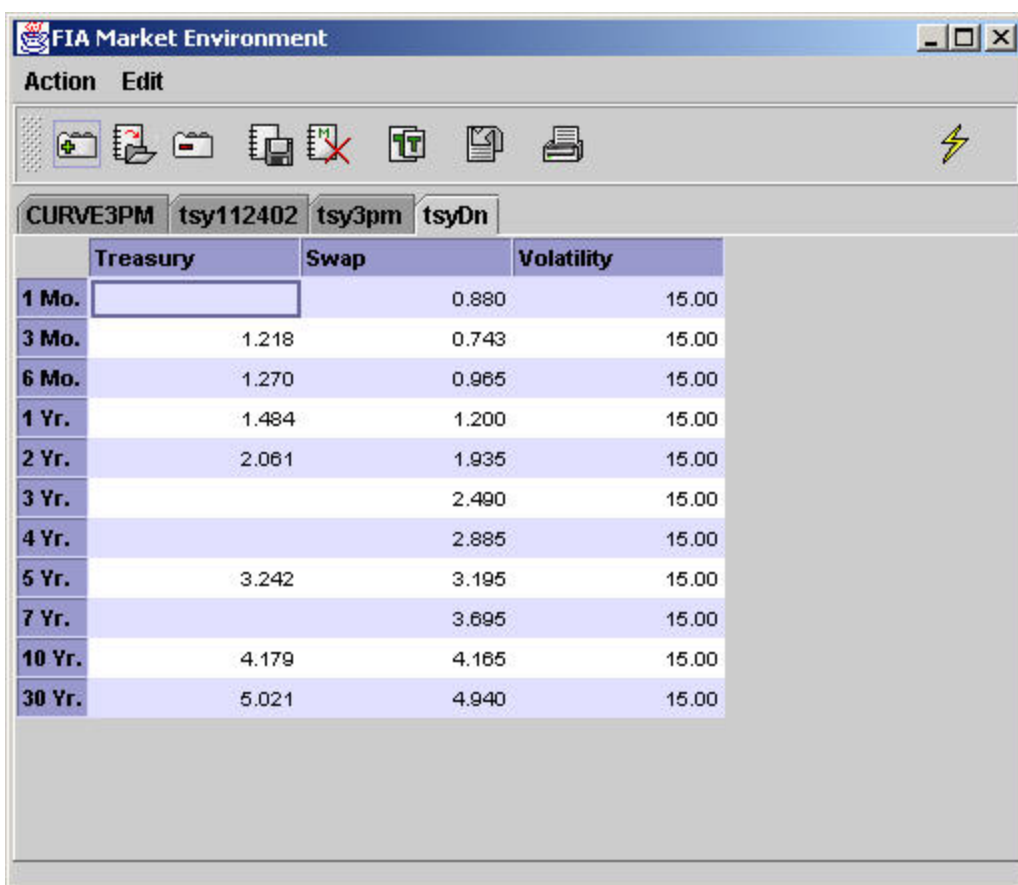
- CUSIP/ISIN/Short Name by entering characters into the field
- Coupon
  - Exact Date by selecting the first option under Maturity Date
  - Between two dates by selecting the second option under Maturity Date
- Maturity Date
  - Exact Date by selecting the first option under Maturity Date
  - Between two dates by selecting the second option under Maturity Date
- Issue Date
  - Exact Date by selecting the first option under Issue Date
  - Between two dates by selecting the second option under Issue Date
- Product Type
  - Search using multiple criteria at the same time to create more specific searches.



**View Editor:** Use this command to select how the data fields are represented in the portfolio/tab.

- To add data fields from the list on the left, highlight the name and click the ► button next to the corresponding categories to add it.
- To remove a data field from a category, highlight the name on the right side, and then click the ◀ button to remove it.
- Adding data fields to the **Fixed Columns** category makes those specific data field columns fixed on the left side of the portfolio/tab.
  - Use the ▲ and ▼ buttons to order the data field columns, with up and down corresponding to left and right.
- Adding data fields to the **Display Columns** category places the data field columns to the right of the fixed columns and they become moveable using the scroll bar.
  - Use the ▲ and ▼ buttons to order the data field columns, with up and down corresponding to left and right.
  - Clicking the **Select/Deselect** button can add all available data fields to the **Display Columns** category or remove all the data fields currently in the **Display Columns** category.
- Adding data fields to the **Sort by Columns** category sorts all the securities in the portfolio/tab according to those data fields.
  - Use the ▲ and ▼ buttons to move the data fields up and down, with higher data fields sorted first.
  - Click on **ACENDING** to change it to **DECENDING** and vice versa.

- Adding data fields to the **Filter by Columns** category allows only the securities fulfilling the filter criteria to be shown.
  - Click on the **Edit** button to edit the filter criteria for that specific data field.
  - Click in the *Operator* column to display the available filter operators.
  - Enter the filter value corresponding to the filter operator in the *Value1* column. A value should not be entered under the *Value2* column unless using the *Between* operator.
  - More filter operators can be added by clicking the **Add Row** button.
  - Filter operators can be deleted by selecting the row and clicking the **Delete Row** button.
  - The two filter types for this data field can be changed by selecting the **Logical** dropdown menu.
    - With the **AND** type filter, only the securities satisfying all of the filter operators will be shown.
    - With the **OR** type filter, any security satisfying any of the filter operators will be shown.



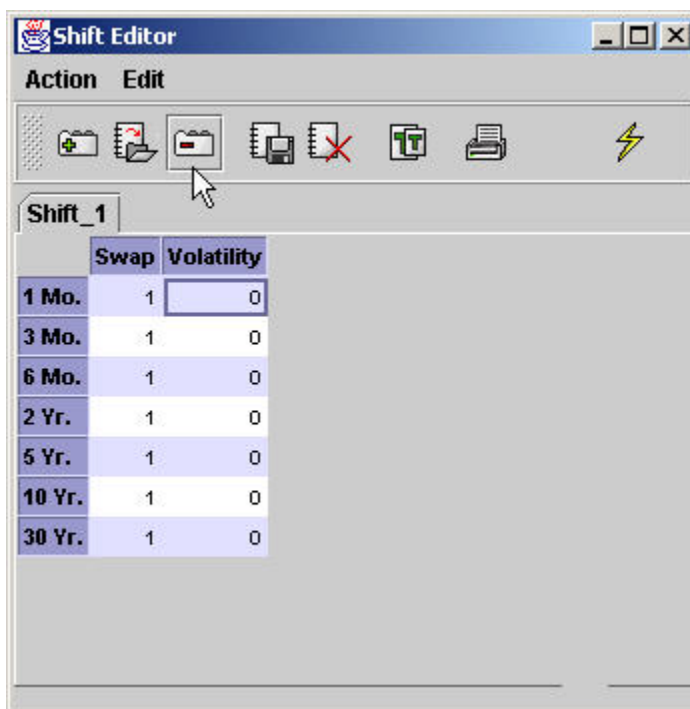
The screenshot shows the 'FIA Market Environment' application window. It features a menu bar with 'Action' and 'Edit', a toolbar with various icons, and a tabbed interface with tabs for 'CURVE3PM', 'tsy112402', 'tsy3pm', and 'tsyDn'. The main display area contains a table with the following data:

	Treasury	Swap	Volatility
1 Mo.		0.880	15.00
3 Mo.	1.218	0.743	15.00
6 Mo.	1.270	0.965	15.00
1 Yr.	1.484	1.200	15.00
2 Yr.	2.061	1.935	15.00
3 Yr.		2.490	15.00
4 Yr.		2.885	15.00
5 Yr.	3.242	3.195	15.00
7 Yr.		3.695	15.00
10 Yr.	4.179	4.165	15.00
30 Yr.	5.021	4.940	15.00

**Market Environment:** This tool allows the user to create market environments, based on treasury, swap, and volatility curves, which will be used by the Fi-Star Fixed Income Analysis program to calculate data on securities in the portfolios.

## Action Menu:

- **New:** Use this command to create a new market environment.
- **Open:** Use this command to open a previously saved market environments.
- **Close:** Use this command to close the currently selected market environment.
- **Save:** Use this command to save the currently selected market environment.
- **Delete:** Use this command to delete previously saved market environments.
- **Duplicate:** Use this command to create a copy of the currently selected market environment and open it in a new tab.
- **Real Time Update:** Use this command to update the currently selected market environment to the real market values.
- **Print Preview:** Use this command to view how the page looks before printing.
- **Exit:** Use this command to quit the market environment tool.

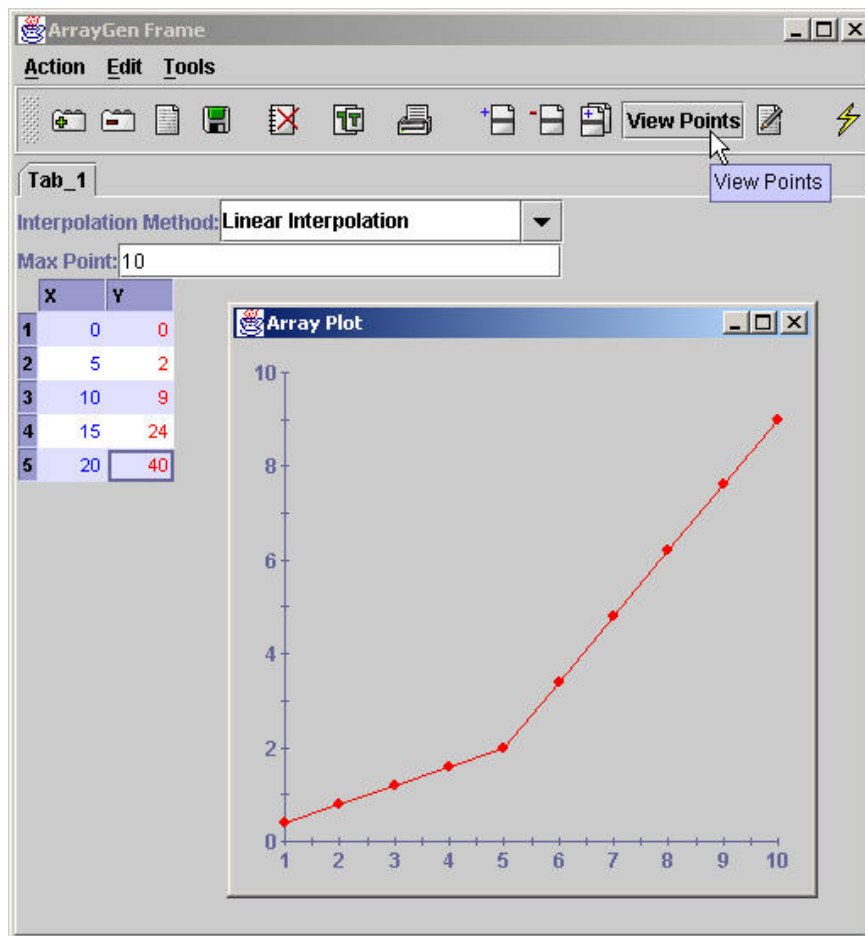


**Shift Editor:** This tool allows the user to create market shift scenarios which will be used by the Fi-Star Fixed Income Analysis program to calculate additional data on securities in the portfolios.

## Action Menu:

- **New:** Use this command to create a new market shift scenario.
- **Open:** Use this command to open a previously saved market shift scenario.
- **Close:** Use this command to close the currently selected market shift scenario.
- **Save:** Use this command to save the currently selected market shift scenario.
- **Delete:** Use this command to delete previously saved market shift scenario.
- **Duplicate:** Use this command to create a copy of the currently selected market shift scenario and open it in a new tab.

- **Print Preview:** Use this command to view how the page looks before printing.
- **Exit:** Use this command to quit the market shift editor.



**Array Generator:** Use this command to create a visual representation of certain trends.

- Choose from three different types of interpolation methods, Linear, and Left or Right Continuous Step Function by clicking on the ▼ button to see the drop down menu.
- Max Points limits the number of points allowed on the graph.
- Fill in the X and Y points in the table to create data points
- Click on the Tools menu to View Points (view the data points in a generated graph) as well as open the view editor.

Action Menu:

- **New:** Use this command to create a new graph.
- **Open:** Use this command to open a previously saved graph.
- **Close:** Use this command to close the currently selected graph.
- **Save:** Use this command to save the currently selected graph.



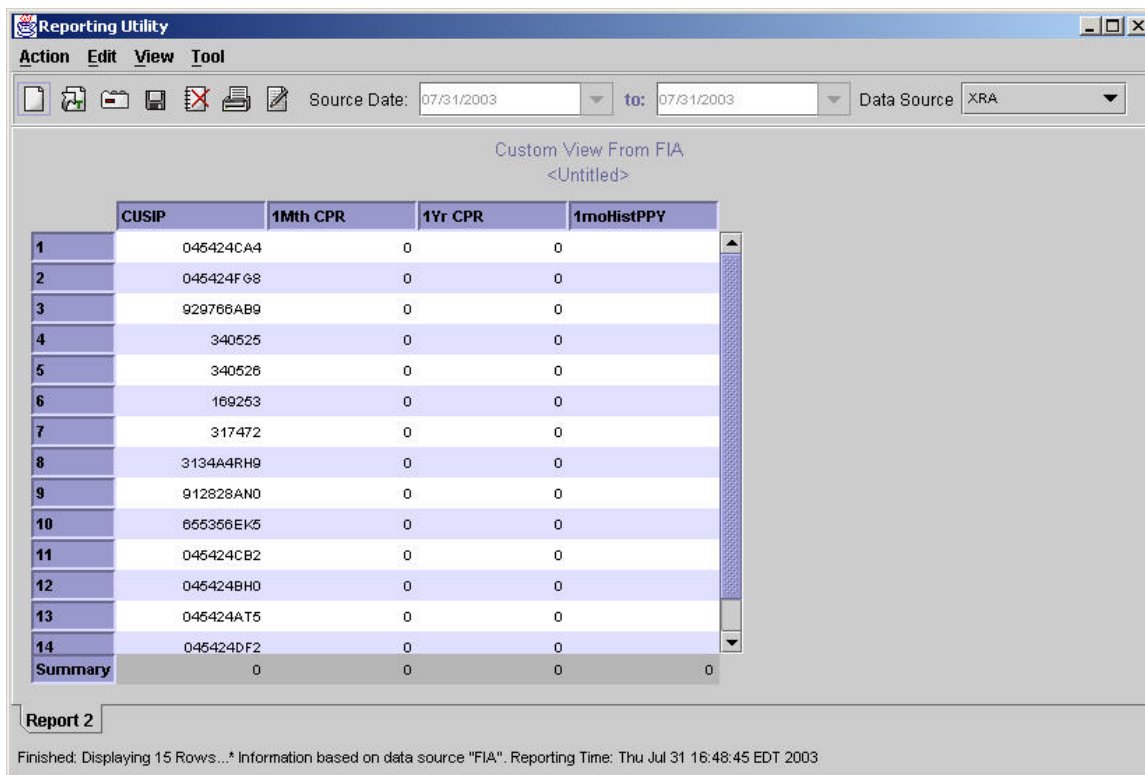
- **Save As:** Use this command to save and name the currently selected graph.
- **Delete:** Use this command to delete previously saved graph.
- **Duplicate:** Use this command to create a copy of the currently selected graph and open it in a new tab.
- **Print Preview:** Use this command to view how the page looks before printing.
- **Exit:** Use this command to quit the array generator.

#### Edit Menu:

- **Cut:** Use this command to cut a particular data field entry.
- **Copy:** Use this command to copy a particular data field entry.
- **Paste:** Use this command to paste a particular data field entry.
- **Insert Row:** Use this command to add a row to the data table.
- **Delete Row:** Use this command to remove a row from the data table.
- **Clone Row:** Use this command to duplicate the row that is currently highlighted.

#### View Menu:

- **View Points:** Displays the data points in a generated graph.
- **View Editor:** Refer to the View Editor section under the Tools Menu.



The screenshot shows a window titled "Reporting Utility" with a menu bar (Action, Edit, View, Tool) and a toolbar. The main area displays a table titled "Custom View From FIA <Untitled>". The table has columns for CUSIP, 1Mth CPR, 1Yr CPR, and 1moHistPPY. It lists 14 rows of data and a Summary row. The status bar at the bottom indicates "Report 2" and "Finished: Displaying 15 Rows... Information based on data source 'FIA'. Reporting Time: Thu Jul 31 16:48:45 EDT 2003".

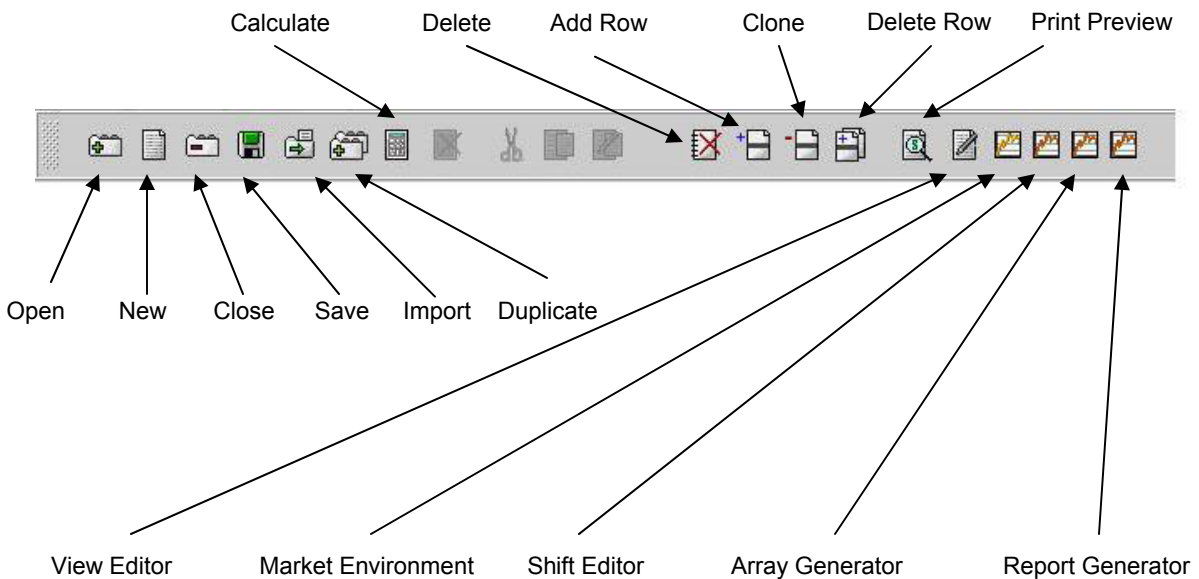
	CUSIP	1Mth CPR	1Yr CPR	1moHistPPY
1	045424CA4	0	0	
2	045424FG8	0	0	
3	929766AB9	0	0	
4	340525	0	0	
5	340526	0	0	
6	169253	0	0	
7	317472	0	0	
8	3134A4RH9	0	0	
9	912828AN0	0	0	
10	655356EK5	0	0	
11	045424CB2	0	0	
12	045424BH0	0	0	
13	045424AT5	0	0	
14	045424DF2	0	0	
Summary	0	0	0	0

**Report Generator:** Use this command to create customized reports.

## Action Menu

- **New Report** is used to create a new report.
  - Once a report is created, click on the Tool menu and select View Editor to add attributes to the report. *Refer to the View Editor Section*
- **Refresh Report** updates the report to the current up-to-date information.
- **Remove Output** removes the report selected from the screen.
- **Save View** saves the current report selected
- **Delete View** deletes the current report selected
- **Print Preview:** Use this command to view how the page looks before printing.
- **Exit:** Use this command to quit the Report Generator.

## GENERAL TOOL BAR COMMANDS



---

**NEW YORK, USA**

Headquarters  
45 Broadway  
9<sup>th</sup> Floor  
New York, NY10006  
646-313-3330

**SHANGHAI, CHINA**

No. 888 Yi-Shan Road  
Cao He Jing Science Park  
Shanghai, China

**TAIPEI, TAIWAN**

No. 246 Cheng-De Road  
Sec. 3, 6<sup>th</sup> Floor  
Taipei, Taiwan

**LOS ANGELES, USA**

LA Office  
161 Mercury Circle  
Pomona, CA 91768

---

This publication contains material that is: (i) for your private information, and we are not soliciting any action based upon it; (ii) not to be construed as a prospectus or offering materials of any kind; and (iii) is based upon information that we consider reliable, but we do not represent that it is accurate or complete, and it should not be relied upon as such. Opinions, forecasts, prices, yields, and other forward looking statements may be based on assumptions which may or may not be accurate, and any such opinions, forecasts or other information are subject to risks and uncertainties and may differ from actual results. Information provided is current as of the date (s) of issuance and is subject to change without notice. While we endeavor to update on a reasonable basis the information discussed in this material, there may be regulatory, compliance, or other reasons to prevent us from doing so. Regarding the companies or entities mentioned herein, Beyondbond, its affiliates, officers, directors, and employees (including persons involved in the preparation of this material) may, prior to or concurrent with this publication: (i) have long or short positions in, and/or buy or sell their securities, or derivatives (including options) thereof; and/or (ii) effect or have effected transactions contrary to Beyondbond's views contained herein. The securities described herein may not have been registered under the Securities Act of 1933, and, in such case, may not be offered or sold within the United States or to US persons unless they are being sold in compliance with an exemption from the registration requirements of such Act. The provision of this research by Beyondbond and its affiliates does not constitute investment advice, and you should not rely on it as such. Neither Beyondbond nor any of its affiliates makes any representations or warranties with respect to any securities or investments. You are responsible for exercising your own judgment (either independently or through your investment advisor) and conducting your own due diligence with respect to investments and their risks and suitability (including reading any relevant final prospectus). Beyondbond and its affiliates are not responsible for any losses that you may incur as a result of your investment decisions, whether direct, indirect, incidental or consequential. No part of this material may be (1) copied, photographed, or duplicated in any form, by any means, or (2) redistributed to anyone (including your foreign affiliates) without Beyondbond's prior written consent. Derivatives and options are not suitable investments for all investors. Additional information may be provided upon request.